



Instagram



LinkedIn



Facebook



Youtube

**Aohua Endoscopy Co.,Ltd.**

**E-mail:** [vets@aohua.com](mailto:vets@aohua.com)

ISO 9001/ISO 13485 Certified  
V2.0\_2405

**China**

No.66, Lane133, Guangzhong Road,  
Minhang District, Shanghai

Tel : 021-5221-0929

**Germany**

Fichtenstrasse 27,  
Brunnthal, Munich

Tel : +49 (0) 81 04/8908-10



# VET-OR1200<sup>Series</sup>

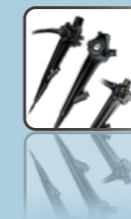
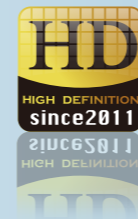
## Veterinary Endoscopy System





# VET-OR1200 Series

## Veterinary Endoscopy System



Providing a solution for both flexible and rigid endoscopy



# VET-OR1200<sup>Series</sup>

## Veterinary Endoscopy System



### VET-OR1200RH

Consists of HD video processor, LED light source, built-in air/water pump, compatible with 1200 series video endoscopes, rigid endoscopes and fiber-optic scopes to make VET-OR1200RH a versatile tool for veterinary clinical applications.



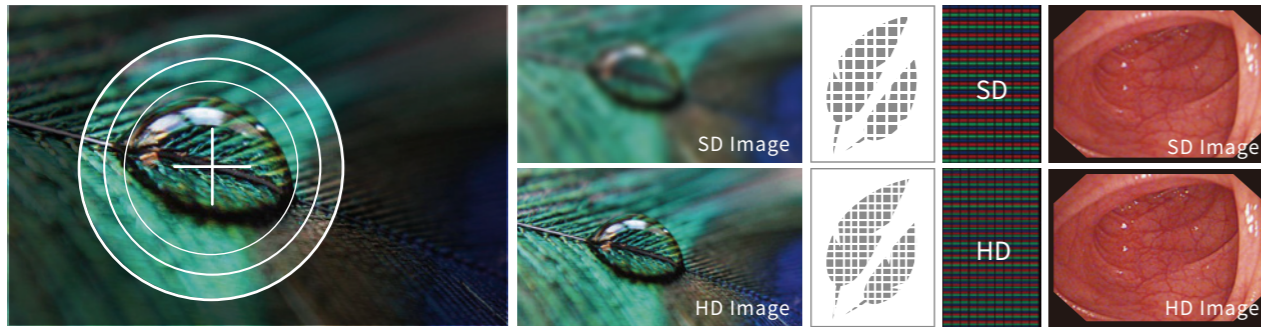
### VET-OR1200HD

Consists of HD video processor, LED light source, built-in air/water pump, compatible with 1200 series video endoscopes supported by Motus 3.0. HbE function and image with video recording USB port.

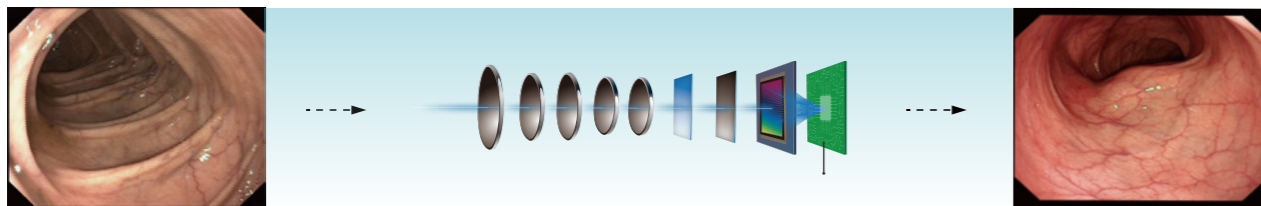


## HD Display Megapixel Rendering

HD image display, more detail, clear insight into slight changes.

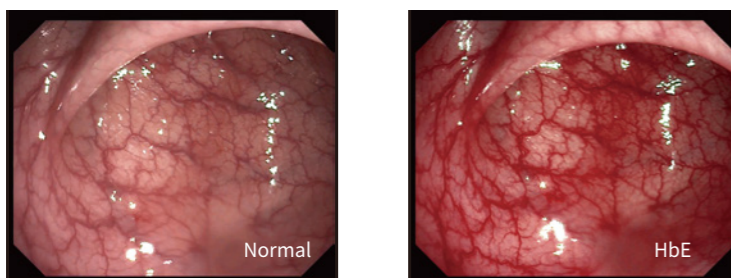


With high resolution image sensor, and introducing digital image processing technology, it can protect the endoscopic color and present the most high-quality images.



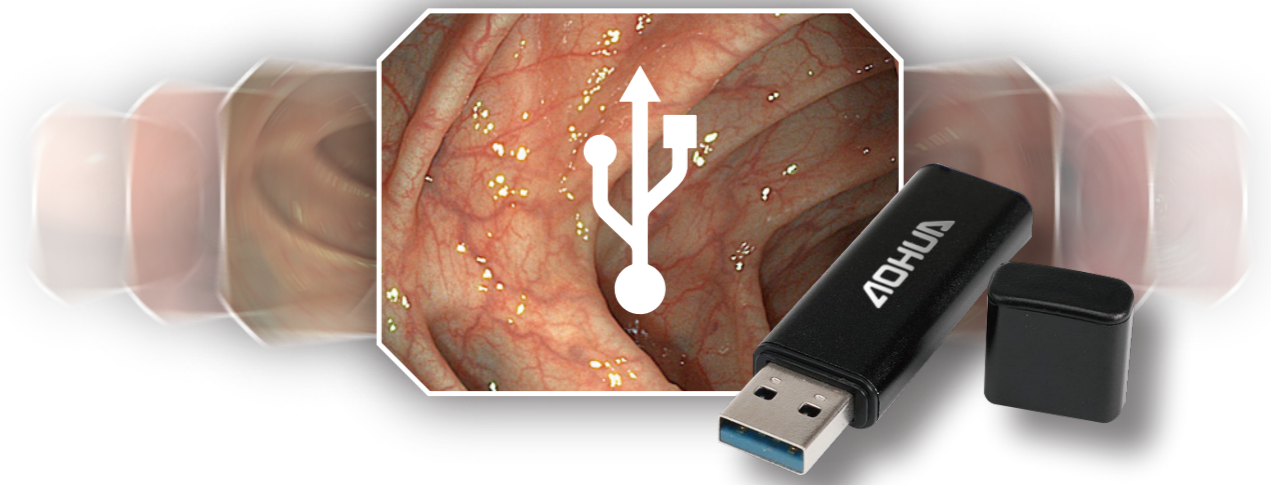
## (HbE) Hemoglobin Enhancement

Depending on the HbE function of the endoscopy system, the heme in blood can be clearly displayed. The possible direction on the blood supply in the affected tissues is more clearly highlighted.

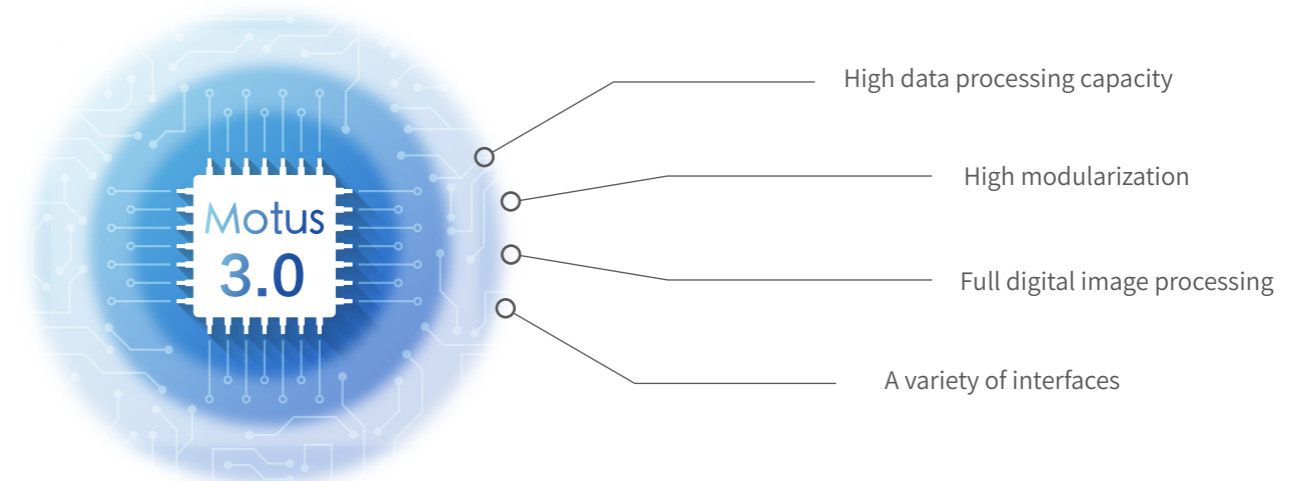


## USB Function

The USB interface can be used to store video and images using USB drive.

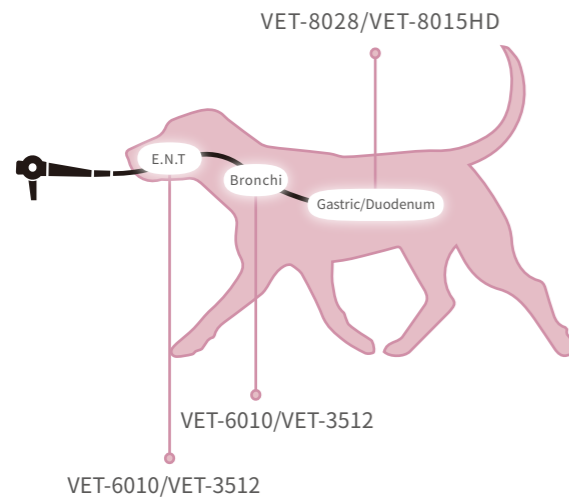


## Motus 3.0 Faster and Stronger



## Companion Animal

### Canine



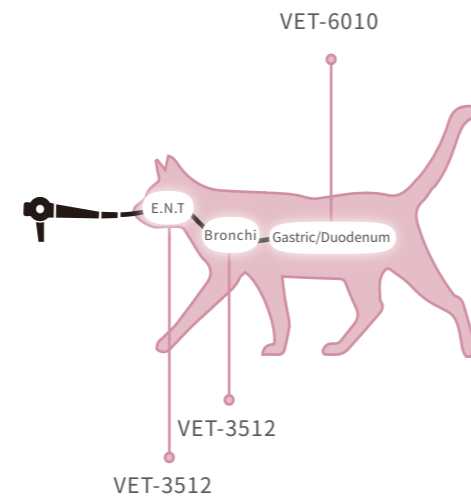
### VET-3512

#### Small Animal Video Bronchoscope

Working length	600 mm
Diameter of distal-end	3.5 mm
Diameter of instrument channel	1.2 mm
Range of bending	U160°D130°



### Feline



### VET-6010

#### Small Animal Video Endoscope

Working length	1000 mm
Diameter of distal-end	6.0 mm
Diameter of instrument channel	2.2 mm
Range of bending	U210°D90° R/L100°



### VET-8028

#### Small Animal Video Gastroscop - big channel

Working length	1500 mm
Diameter of distal-end	8.0 mm
Diameter of instrument channel	2.8 mm
Range of bending	U210°D90° R/L100°



### VET-8015HD

#### High Definition Small Animal Video Gastroscope

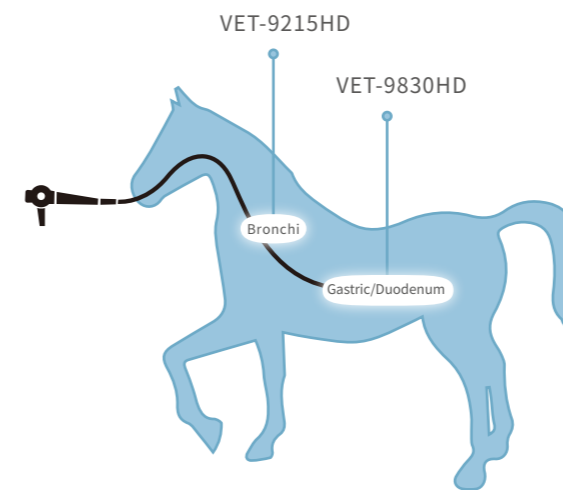
Working length	1500 mm
Diameter of distal-end	8.5 mm
Diameter of instrument channel	2.0 mm
Range of bending	U210°D90° R/L100°



## Large Animal

With the extended length and sleek design, Aohua multipurpose veterinary endoscopes are ideal for numerous large animal applications, including: gastroscopy, esophagoscopy, tracheoscopy, rhinoscopy, pharyngoscopy and laryngoscopy. Large working channel facilitates larger biopsies to ensure a more accurate diagnosis and uniform image brightness, even under difficult lighting.

### Equine



### VET-9833HD

#### High Definition Equine Gastroscope

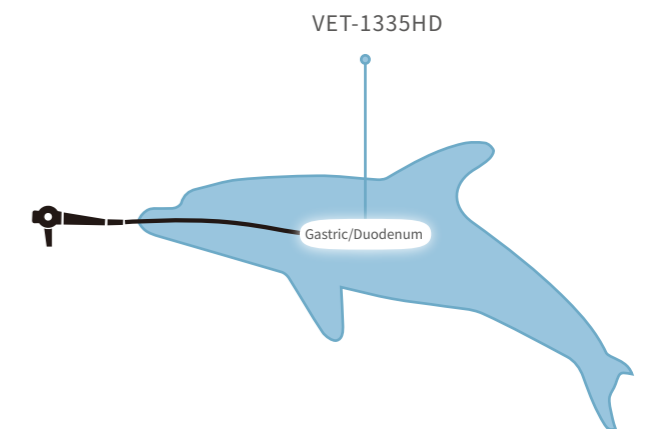
Working length	3000 mm
Diameter of distal-end	9.6 mm
Diameter of instrument channel	2.8 mm
Range of bending	U210°D90° R/L100°

### VET-9215HD

#### High Definition Equine Bronchoscope & Small Animal Gastro-Colonoscope

Working length	1500 mm
Diameter of distal-end	9.0 mm
Diameter of instrument channel	2.8 mm
Range of bending	U210°D90° R/L100°

### Dolphins



### VET-1335HD

#### High Definition Equine & Dolphin Gastroscope

Working length	3500 mm
Diameter of distal-end	12.8 mm
Diameter of instrument channel	3.7 mm
Range of bending	U/D180° R/L160°



## VET-OR1200RH Rigid Endoscope

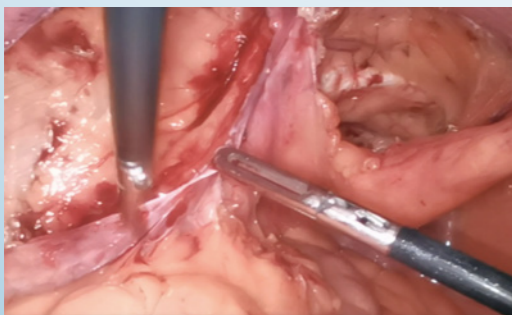
### Camera head

Ergonomic design and light weight to reduce fatigue during veterinary surgery. Fully waterproof design, easy to clean and disinfect. Build-in USB recording, full HD photo and videos could be recorded by remote camera head mounted on the bottom. Remote images and videos captured with one click.



### C-mount

More specifications to better fit diameters of different diameters rigid endoscopes. Focal length: 25mm, 18-35mm.



## Veterinary Rigid Endoscopy Kits

01

ENT/Otoscopy Kit

02

Rhinology / Nasopharyngeal Endoscopy Kit

03

Diagnostic Endoscopy Kit

04

Urology / Vaginoscopy / Hysteroscopy Kit

05

Artificial Insemination Kit

06

Exotic Animals Kit

07

Micro Endoscopy Kit

08

Arthroscopy Kit

09

Laparoscopy Kit



# Medical Monitor&Mobile Trolley

AET-3 / AET-5 / Monitor

## Mobile Trolley

### AET-5 Single-deck mobile trolley

#### Small size and light weight

- 1 fixed monitor mount, can be equipped with 19-inch monitor.
- An endoscope holder that can adjust the height and angle.
- Supports one endoscope.
- 4 rollers, the front 2 have brake settings, which is convenient for the movement and fixed position of the trolley.



### AET-3 Multi-deck mobile trolley

#### Large storage space

- 4 safety shelves, the middle 2 shelves can be adjusted in height, the endoscope processor and other endoscope peripheral equipment are placed.
- 1 height adjustable endoscope holder, can support 2 endoscopes at the same time.
- 1 monitor arm that can be adjusted left and right, strong support, can be equipped with 19-inch and 27-inch medical monitors.
- 1 drawer for a keyboard or small items.
- 4 rollers, the front 2 have brake settings, which is convenient for the movement and fixed position of the trolley.



## Medical Monitor

### Monitor

- 19/27 inch medical standard monitor.
- True and accurate medical grade image.
- High brightness, high contrast ratio and wide viewing angle.



### Wide Viewing Angle

IPS or IPS-PRO panel is a better ideal option for surgical imaging, as IPS or IPS-PRO technology performs wider viewing angle with better contrast ratio and color reproduction.

### Anti-reflective

By adding multi-layer AR nano coating to the surface of the protective screen, the reflection of light can be effectively reduced. With the full lamination technology, the reflectivity of the whole machine can be controlled within 2%.

## Ambulatory Flight-Case with Laptop Shelf

This robust and sturdy flight-case is for use with the Aohua HD video processors. It is fully-lockable and has enough storage space to hold accessories. This case is fitted with a shelf for transporting laptops. A case with a built-in monitor is available if you do not wish to use the system with a laptop and prefer a built-in monitor.

Proportions: 33cm (H) 58cm (L) 53cm (W)



## Veterinary Endoscopic Accessories

01

Biopsy Forceps

02

Grasping Forceps

03

Accessories for HF Surgery

04

Cleaning Brush

05

Veterinary Stent

06

Other Accessories

07

Accessories Kit

